



# Exploring Evidence-Based Legal and Policy Strategies to Prevent Fatal Injuries and Violence

Angela McGowan, JD, MPH

Project Director

Office of Disease Prevention and Health (ODPHP)

U.S. Department of Health and Human Services

October 31, 2018

# Agenda and Featured Speakers

## I. Introduction to Healthy People, the Law and Health Policy Project, and the Role of Evidence-Based Legal and Policy Approaches to Address Healthy People 2020's Leading Health Indicators

- Angela McGowan, Project Director, ODPHP



## II. Tools, Resources, and Frameworks to Integrate Evidence-Based Legal and Policy Strategies into Contemporary Public Health Practice

- Montrece Ransom, Team Lead, Public Health Law Training and Workforce Development, CDC Public Health Law Program



### III. Vacant Property Reclamation and Reuse—Exploring the Intersections of Housing and Health Laws, Policies and Programs

- Joseph Schilling, Senior Policy and Research Fellow, Metropolitan Housing and Communities Policy Center and Research to Action Lab, Urban Institute



### IV. Question and Answer Session with All Presenters

- Moderator: Angela McGowan, ODPHP

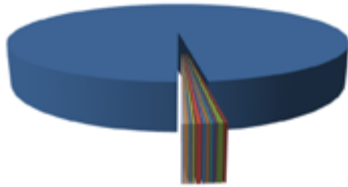


# What Is Healthy People?

- Provides a strategic framework for a **national prevention agenda** that communicates a vision for improving health and achieving health equity
- Identifies science-based, **measurable objectives with targets** to be achieved by the end of the decade
- Requires tracking of **data-driven outcomes** to monitor progress and to motivate, guide, and focus action
- Offers a model for international, state, and local **program planning**



- A subset of the 1,200 Healthy People 2020 objectives



- Address critical health issues that can reduce the leading causes of preventable death and illness
- Linked to specific Healthy People 2020 objectives
- Intended to motivate action to improve the health of the Nation



# Leading Health Indicator Topics



**Access to  
Health Services**



**Clinical Preventive  
Services**



**Environmental  
Quality**



**Injury and  
Violence**



**Maternal, Infant &  
Child Health**



**Mental Health**



**Nutrition, Physical  
Activity & Obesity**



**Oral Health**



**Reproductive &  
Sexual Health**



**Social  
Determinants**



**Substance  
Abuse**



**Tobacco**

## Why Focus on Law and Policy?

- Create societal norms and influence behaviors
- Give authority and flexibility to governments to act on community needs
- Effective application and implementation of law is essential to protecting and promoting health



## Purpose of the Law and Health Policy Project

- Provide in-depth analysis of laws and policies
- Develop evidence-based resources and reports
- Share examples of laws and policies related to specific topic areas and objectives
- Disseminate lessons to Healthy People and other relevant stakeholders
- Highlight state, local, and tribal laws and policies that have proven outcomes



Robert Wood Johnson Foundation



## Reports and Related Products

- Report: *The Role of Law and Policy in Achieving the Healthy People 2020 Nutrition and Weight Status Goals of Increased Fruit and Vegetable Intake in the United States*
- Bright Spots:
  - Counting Carrots in Corner Stores: The Minneapolis Staple Foods Ordinance
  - Promoting Fruits and Vegetables Through Financing Policies: The Healthy Diné Nation Act



## Webinars

- Series focused on specific HP2020 topics and sharing community examples
- September 2018 webinar: From Policy to Plate: Increasing Fruit and Vegetable Intake

## Supporting the Development of Healthy People 2030

- Healthy People 2030 Listening Session: 2018 Public Health Law Conference

For more information: [www.healthypeople.gov/2020/law-and-health-policy](http://www.healthypeople.gov/2020/law-and-health-policy)





# Tools to Identify and Evaluate Evidence-Based Laws and Policies that Prevent Fatal Injuries and Violence



# What Works: Evidence-Based Interventions to Protect and Promote Public Health



The National Academies of

SCIENCES  
ENGINEERING  
MEDICINE

CDC'S 6|18  
INITIATIVE  
Accelerating  
Evidence  
into Action

SIX WAYS TO SPEND SMARTER  
FOR HEALTHIER PEOPLE



**Search Criteria**

36 Related EBPs [Reset](#)

Topic Area (1 Selected)

- Access to Health Services (24)
- Adolescent Health (22)
- Arthritis, Osteoporosis, and Chronic Bone Conditions (14)
- Blood Disorders and Blood Safety (2)
- Cancer (74)
- Chronic Kidney Disease (4)
- Dementias, Including Alzheimer's Disease (3)
- Diabetes (18)

Clear Selection(s)

Objectives (0 Selected)

Strength of Evidence (0 Selected)

Developed By (0 Selected)

Implemented By (0 Selected)

Resource Type (0 Selected)

Population Group (0 Selected)

**Search Healthy People 2020 Evidence-Based Resources** ?

Select a Healthy People 2020 topic area to narrow your results.

Your search for **Injury and Violence Prevention** returned 36 results.

[Reset Search Criteria](#)

Viewing 25 of 36 results

Strength of Evidence	Evidence-Based Resource	Publication Date	Resource Type
<div style="width: 75%; height: 10px; background-color: #4CAF50; margin-bottom: 2px;"></div> <div style="width: 25%; height: 10px; background-color: #ccc; margin-bottom: 2px;"></div> 3 out of 4	<a href="#">A CDC Compendium of Effective Fall Interventions: What Works for Community-Dwelling Older Adults, 2nd Edition</a> CDC/NIPC	2010	Non-Systematic Review
Topic Area(s): Injury and Violence Prevention			
<div style="width: 100%; height: 10px; background-color: #4CAF50; margin-bottom: 2px;"></div> 4 out of 4	<a href="#">Adolescent Health: Person-to-Person Interventions to Improve Caregivers' Parenting Skills</a> Community Preventive Services Task Force	2007	Systematic Review
Topic Area(s): Adolescent Health, Family Planning, Injury and Violence Prevention			



- Laws and policies as public health interventions
- Laws and policies that support public health interventions and practices

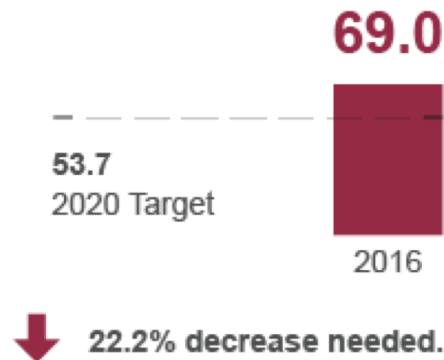




## Injury Deaths

In 2016, 69.0 deaths per 100,000 population (age adjusted) were caused by injuries.

Data source: National Vital Statistics System–Mortality (NVSS–M), CDC/NCHS; and Bridged-race Population Estimates, CDC/NCHS and Census.



### Approaches to Prevent Fatal Injuries

### Evidence-Based Legal and Policy Strategies

#### IVP 1-1: Injury Deaths

Motor vehicle injury prevention

Helmet laws, seatbelt laws, laws and ordinances to promote complete streets and holistic safe transit systems, policies to reduce drunk and impaired driving, and graduated driver licensing systems

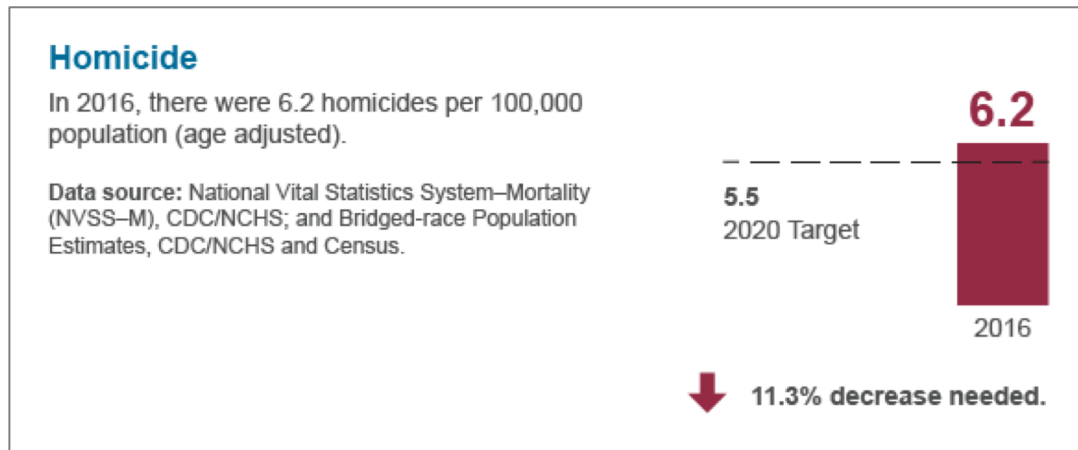
School-based violence prevention

Anti-bullying legislation and policies, dating abuse policies



	Legal and Policy Strategies	Recommendations and Evidence	Year
Community Guide	Maintaining minimum legal drinking age laws	Recommended on the basis of <b>strong</b> evidence	2000
	Maintaining limits on hours of alcohol sales	Recommended on the basis of <b>sufficient</b> evidence	2009
	Privatization of retail alcohol sales	Recommended <b>against</b> on the basis of <b>strong</b> evidence	2011
	Over-service law enforcement initiatives	<b>Insufficient</b> evidence to make a recommendation	2010
National Academies of Sciences, Engineering, and Medicine	Maintaining minimum legal drinking age laws	Recommendation 3-3: Federal, state, and local governments should adopt and/or strengthen laws and dedicate enforcement resources to stop illegal alcohol sales (i.e., sales to already-intoxicated adults and sales to underage persons).	2018
	Over-service law enforcement initiatives		
	Maintaining limits on hours of alcohol sales	Recommendation 3-2: State and local governments should take appropriate steps to limit or reduce alcohol availability, including restrictions on the number of on- and off-premises alcohol outlets, and the days and hours of alcohol sales.	2018
	Privatization of retail alcohol sales		





## Approaches to Prevent Homicides

## Evidence-Based Legal and Policy Strategies

### IVP 29: Homicides

Restriction on alcohol access

Dram shop liability, liquor sale zoning and business regulation, alcohol pricing and taxing policies

School-based violence prevention

Anti-bullying legislation and policies, dating abuse policies

Criminal justice policies

Hot-spotting and proactive policing models



- Laws and policies shape the political, social, and economic environments where we all live, learn, work, worship, and play
  - Laws can serve as evidence-based interventions to help reach Healthy People targets
  - Public health interventions—including laws and policies—should be evaluated to:
    - Analyze and determine whether desired outcomes are achieved
    - Learn if there are unintended consequences that need to be mitigated
    - Share findings about the effectiveness of strategies (positive and negative)
- Resources are available to help identify evidence-based laws and policies and to evaluate the impact of legal and policy interventions on health outcomes



- For more on the Healthy People initiative (including the development of Healthy People 2030): [www.healthypeople.gov](http://www.healthypeople.gov)
- For information about the Law and Health Policy project: <https://www.healthypeople.gov/2020/law-and-health-policy>
- For questions, please contact:
  - Angie McGowan, Project Director, ODPHP: [Angela.McGowan@hhs.gov](mailto:Angela.McGowan@hhs.gov)





# Tools, Resources, and Frameworks to Integrate Evidence-Based Legal and Policy Strategies into Contemporary Public Health Practice

October 31, 2018



**Montrece McNeill Ransom, JD, MPH**  
Team Lead, Training and Workforce Development  
Public Health Law Program (PHLP)  
Center for State, Tribal, Local, and Territorial Support



Centers for Disease Control and Prevention  
Office for State, Tribal, Local and Territorial Support

# CDC-PHLP Disclaimer

These course materials are for instructional use only and are not intended as a substitute for professional legal or other advice. While every effort has been made to verify the accuracy of these materials, legal authorities and requirements may vary from jurisdiction to jurisdiction. Always seek the advice of an attorney or other qualified professional with any questions you may have regarding a legal matter.

The contents of this presentation have not been formally disseminated by the Centers for Disease Control and Prevention and should not be construed to represent any agency determination or policy.

## Public Health Professionals Gateway



## Public Health Law Program

CDC > [STLT Gateway Home](#)



### Tribal Public Health Law Resources

Law and policy resources related to tribal public health

### Emergency Preparedness



### Publication



# CDC's Public Health Law Program

**Mission: To advance the use and understanding of law as a public health tool**

### Public Health Law News

A free newsletter on public health law and policy

▶ Sign up

▶ Read the News

# Integrating Evidence-Based Legal and Policy Strategies into Contemporary Public Health Practice



## **Resource**

The Public Health Law Academy



## **Tool**

Legal Epidemiology



## **Framework**

The Five Essential Public  
Health Law Services



## PUBLIC HEALTH LAW ACADEMY



Introduction to Public Health Law  
Hot Topics in Public Health Law  
Legal Epidemiology

There is hardly a public health challenge today that can be resolved without the assistance of legal or policy solutions. Public health professionals at the local, state, and federal levels need to have a clear understanding of our legal system and its role in improving overall population health.

The Public Health Law Academy, supported by the Centers for Disease Control and Prevention (CDC), provides a deeper understanding of the use of law and policy to improve population health outcomes. Developed in cooperation with ChangeLab Solutions, the free and easy-to-use online trainings offered by the Public Health Law Academy are essential for all public health professionals.

**Advance your skills and competencies in public health: explore our trainings!**

- [Introduction to Public Health Law](#)
- [Hot Topics in Public Health Law](#)
- [Legal Epidemiology Center](#)

The online trainings can also be used by other professionals, such as public health lawyers, public health nurses, public health educators, public health advocates, and public health faculty and students in graduate and undergraduate university programs.

*These materials were developed with the support of Cooperative Agreement Number NU087000141 from the Centers for Disease Control and Prevention. Its contents are solely the responsibility of the authors and do not necessarily represent the official views of the Centers for Disease Control and Prevention or the Department of Health and Human Services.*

[Introduction to Public Health Law >](#)



The mark "CDC" is owned by the US Dept. of Health and Human Services and is used with permission. Use of this logo is not an endorsement by HHS or CDC of any particular product, service, or enterprise.

# Key features and benefits:

- Competency-based trainings
- Online, on demand, interactive
- Facilitator toolkits
- Leverages CDC-branded version of the Public Health Foundation's TRAIN
- Legal epidemiology center

## Public Health Law Academy

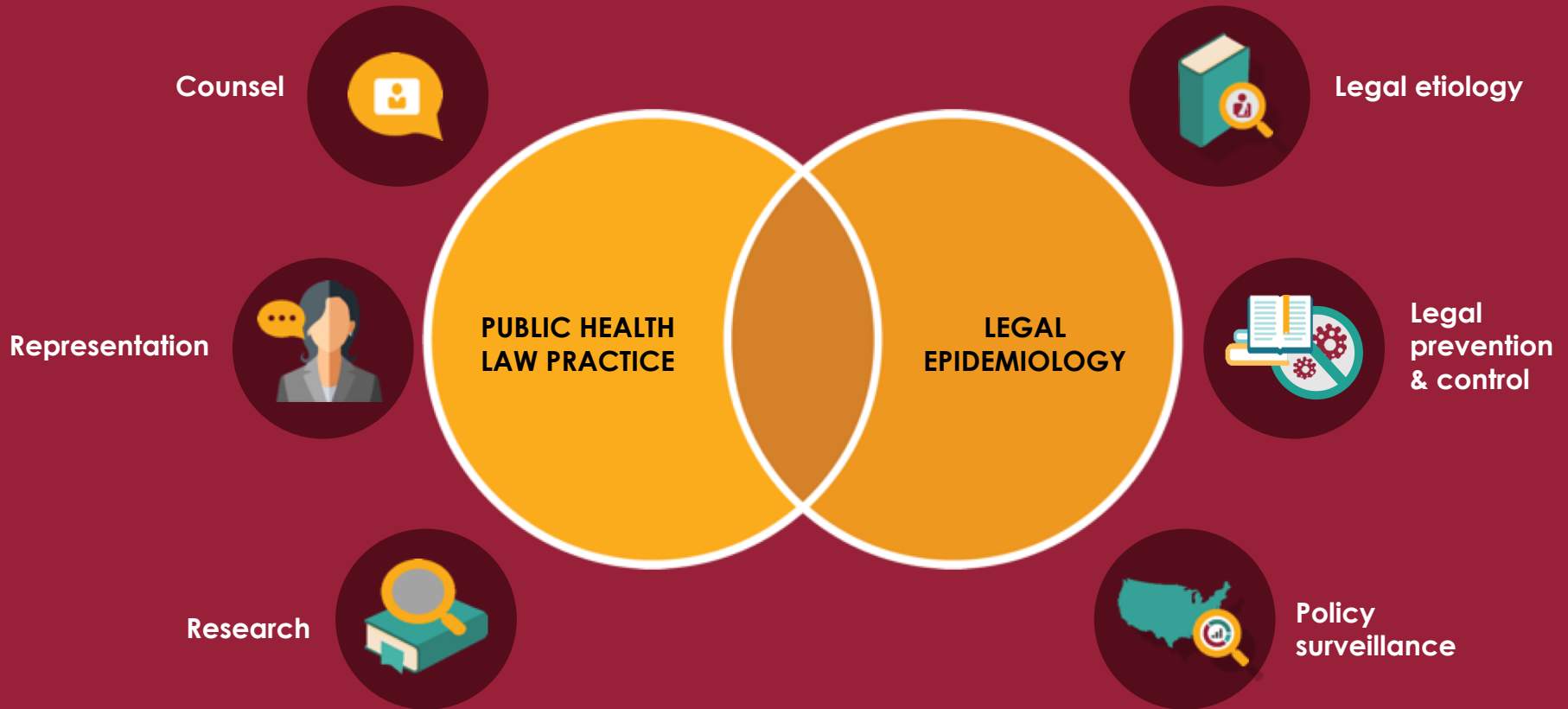
[www.publichealthlawacademy.org](http://www.publichealthlawacademy.org)

# Legal Epidemiology



Scientific study and deployment of law as a factor in the cause, distribution, and prevention of disease and injury in a population.

# Legal practice *applies* the law; legal epidemiology *measures* it.



# Legal Epidemiology in the Field



- Public Health Emergency Preparedness
- Tribal Public Health
- Health Information and Data
- Health Care Quality
- Health Equity
- Global Public Health
- Vaccinations/Immunizations
- Environmental Health
- Birth Defects
- Aquatic Health
- Opioids
- and more...





# American Public Health Association Annual Meeting

## Despair to Hope: How Telehealth Law Can Be Used To Reduce Deaths of Despair

- Dawn Pepin, JD, MPH and Rachel Hulkower, JD, MSPH
- Tuesday, November 13, 2018  
3:00–4:00 p.m.

### Despair to Hope: How Telehealth Law Can Be Used To Reduce Deaths of Despair

Dawn Pepin, JD, MPH<sup>1</sup> and Rachel Hulkower, JD, MSPH<sup>1</sup>

#### BACKGROUND

"Diseases and deaths of despair" describe the current trend in rural communities of increased diseases and premature deaths due to overdose, suicide, and liver disease.<sup>1</sup> These trends are increasing while at the same time rural hospitals are being shut down at higher rates than hospitals in urban communities, making access to health care, including mental health services, more difficult in rural communities.<sup>2</sup> The shortage of mental health professionals in rural communities is well documented,<sup>3</sup> and telemental health provides a possible avenue for increasing access to mental health services in communities seeing a spike in diseases and deaths of despair.

Telemental health is a promising technology for improving mental healthcare and public health because it—

1. Could significantly increase mental healthcare access to underserved populations
2. Is increasingly considered a recognized standard of care
3. Has the potential to save billions of dollars in healthcare expenditures

The use of telehealth in general has expanded exponentially in recent decades, but telehealth faces a number of barriers hindering widespread adoption, including information security, patient privacy, licensing, and liability. Through a 50-state legal assessment, the researchers explored the ways that states are using law as a tool to expand access to mental health services.

Collection of Laws

Phase I

Phase II

#### 50-STATE LEGAL ASSESSMENT

**Methods:** Using a standardized search string, we collected statutes and regulations in effect as of July 1, 2017, containing any reference to "telehealth," "telemedicine," "teleradiology," or any profession specifically labeled as "tele-profession" (e.g., "teleradiology") in the literature. Jurisdictions included US states, the District of Columbia (DC), the Commonwealth of Puerto Rico (PR), the US Virgin Islands (USVI), the Territory of Guam, and the Commonwealth of the Northern Mariana Islands (CNMI) with statutes and regulations in the Westlaw legal database.

**Coding:** Based on a literature review, we developed 20 coding categories of legal and public health topics addressed within the relevant laws.

#### RESULTS

2,233 statutes and regulations collected from all 50 states, DC, PR, USVI, and Guam, which were categorized by the nature of telehealth use described in the law. No relevant laws were found for CNMI.

**Professions and practice areas specifically addressed in relevant telehealth laws include but are not limited to—**

- Practice of medicine
- Nursing
- Pharmacy
- Psychiatry
- Psychology
- Counseling
- Behavior analysis
- Opticals
- Addiction treatment
- Children's health

Legal Topic	Number of Laws
Insurance	246
Delivery of services	216
Delivery of services	216
Mental health	198
Overlap	158
All other categories	648

- All states, DC, PR, USVI, and Guam have at least one law governing telehealth, but the number and nature of those laws vary greatly by jurisdiction.
- 34 states and DC have telemental health laws. Of those—
  - 44% also referenced substance abuse
  - 77% also referenced insurance

#### DISCUSSION

This assessment of all telehealth laws referencing mental health indicates that the majority of jurisdictions have at least one law referencing telemental health. This suggests that those jurisdictions are considering the use of telehealth to increase access to mental health services, particularly with regards to insurance reimbursement. This also suggests that telehealth is beginning to emerge as a viable tool in the field of mental health services. Law is an important tool in facilitating telemental health reimbursement and access in rural communities. Public health practitioners should continue to study the implications of telemental healthcare in reducing the public health burden on diseases of despair in order to better inform the quickly changing legal landscape of telehealth laws to better meet public health needs.

#### REFERENCES

1. Stein EM, Gorman KP, Iglewicz DC, Benington PL. The epidemic of despair among white Americans trends in the leading causes of premature death, 1999–2015. *American Journal of Public Health* 2017;107(10):1541–7.
2. Hospital's struggle likely to increase MHA. *State* last received: October 2017.
3. *AMERICAN PSYCHIATRY ASSOCIATION*. There's a severe shortage of mental health professionals in rural areas. There's only that a service on-line. *CNN*. June 22, 2018.

<sup>1</sup>Cherokee Nation Assurance, Public Health Law Program, Center for State, Tribal, Local, and Territorial Support, Public Health Law Program, CDC

**CONTACT US**  
Public Health Law Program: [phlaw@cdc.gov](mailto:phlaw@cdc.gov)

U.S. Department of Health and Human Services  
Centers for Disease Control and Prevention

## For more on public health law and legal epidemiology:

- Visit the Public Health Law Academy Legal Epidemiology Center: [www.changelabsolutions.org/phla/legal-epidemiology-center](http://www.changelabsolutions.org/phla/legal-epidemiology-center)
- Submit a technical assistance request to PHLP at [www.cdc.gov/phlp/technicalassistance](http://www.cdc.gov/phlp/technicalassistance) or email us at [phlawprogram@cdc.gov](mailto:phlawprogram@cdc.gov)
- Visit our website to learn about our program and available resources: [www.cdc.gov/phlp](http://www.cdc.gov/phlp)
- Subscribe to CDC's *Public Health Law News* at [www.cdc.gov/phlp/news/current.html](http://www.cdc.gov/phlp/news/current.html)

**Contact:**  
**Montrece McNeill Ransom, JD, MPH**  
**[mransom@cdc.gov](mailto:mransom@cdc.gov)**

For more information, contact CDC  
1-800-CDC-INFO (232-4636)  
TTY: 1-888-232-6348 [www.cdc.gov](http://www.cdc.gov)

The findings and conclusions in this report are those of the authors and do not necessarily represent the official position of the Centers for Disease Control and Prevention.





# Vacant Property Reclamation and Reuse—

Exploring the Intersections of Housing and Health Laws, Policies and Programs

Senior Policy and Research Associate, Urban Institute  
[JSchilling@Urban.org](mailto:JSchilling@Urban.org)

# Game Plan for Today

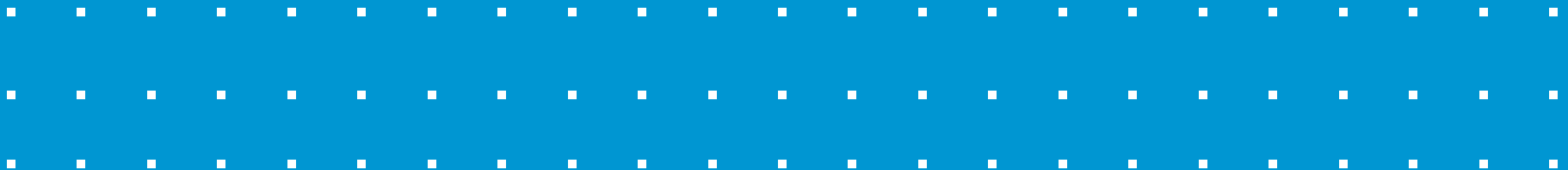
- Vacant Property Research Network
  - Background
  - The Five Ps
  - Urban Blight and Public Health
- Case Study: Memphis Health Impact Assessment on Strategic Housing Code Enforcement



# Vacant Property Research Network

@VRPNetwork

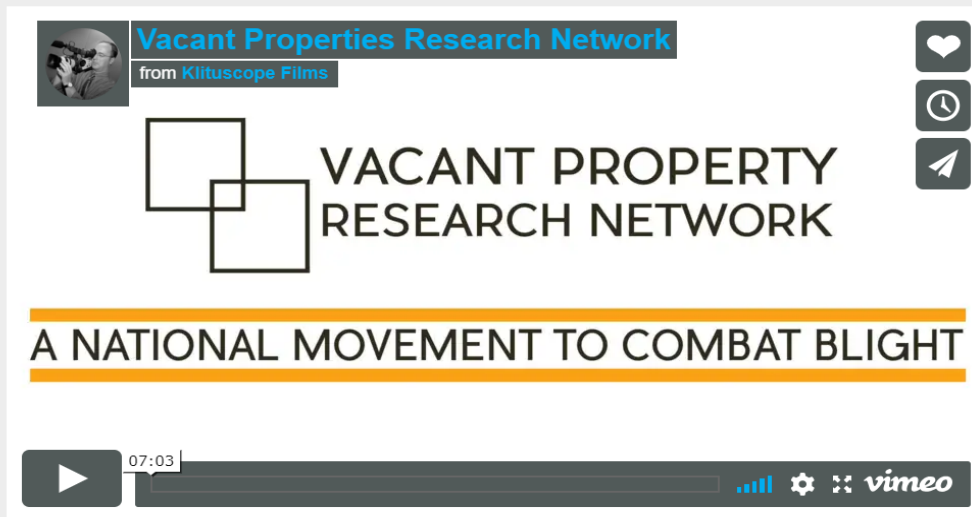
[www.vacantpropertyresearch.com](http://www.vacantpropertyresearch.com)





VPR Network

## Our Impact



Vacant Properties Research Network  
from Klituscope Films

VACANT PROPERTY  
RESEARCH NETWORK

A NATIONAL MOVEMENT TO COMBAT BLIGHT

07:03

vimeo

Our impact spans the landscape of academic fields such as urban planning, policy, law, and public health while also working hand-in-hand to resolve problems with local officials and community leaders in cities across the country. Experts, policymakers and the [media](#) have turned to VPR Network's publications, such as the [national literature review on blight](#) for objective analysis and strategic guidance. In Memphis, we helped local officials, nonprofits, and community members create the [nation's first blight charter](#). Our work in Youngstown, Ohio redefines what [strategic code enforcement](#) means for smaller, older industrial legacy cities and expands the contours of this emerging practice. Collectively, our impact grows as our network grows and evolves as the vacant property movement evolves.

<https://vacantpropertyresearch.com/our-impact/>

# VPR Network Translation Briefs

- Urban Greening
- Strategic Code Enforcement
- Basics of Blight
- Neighborhood Change
- Real Property Data
- Strategic Demolition

<https://vacantpropertyresearch.com/translation-briefs/>





# CHARTING THE MULTIPLE MEANINGS OF BLIGHT

A National Literature Review on Addressing the Community Impacts of Blighted Properties

FINAL REPORT

May 6<sup>th</sup>, 2015

SUBMITTED TO:  
Keep America Beautiful  
(www.kab.org)

PREPARED BY:  
The Vacant Properties Research Network  
A project of the Metropolitan Institute at Virginia Tech  
In collaboration with Econsult Solutions, Inc.

**KEEP AMERICA  
BEAUTIFUL**

 **ECONSULT  
SOLUTIONS**  
economics | policy | strategy

 **VirginiaTech** | METROPOLITAN  
*Invent the Future®* INSTITUTE

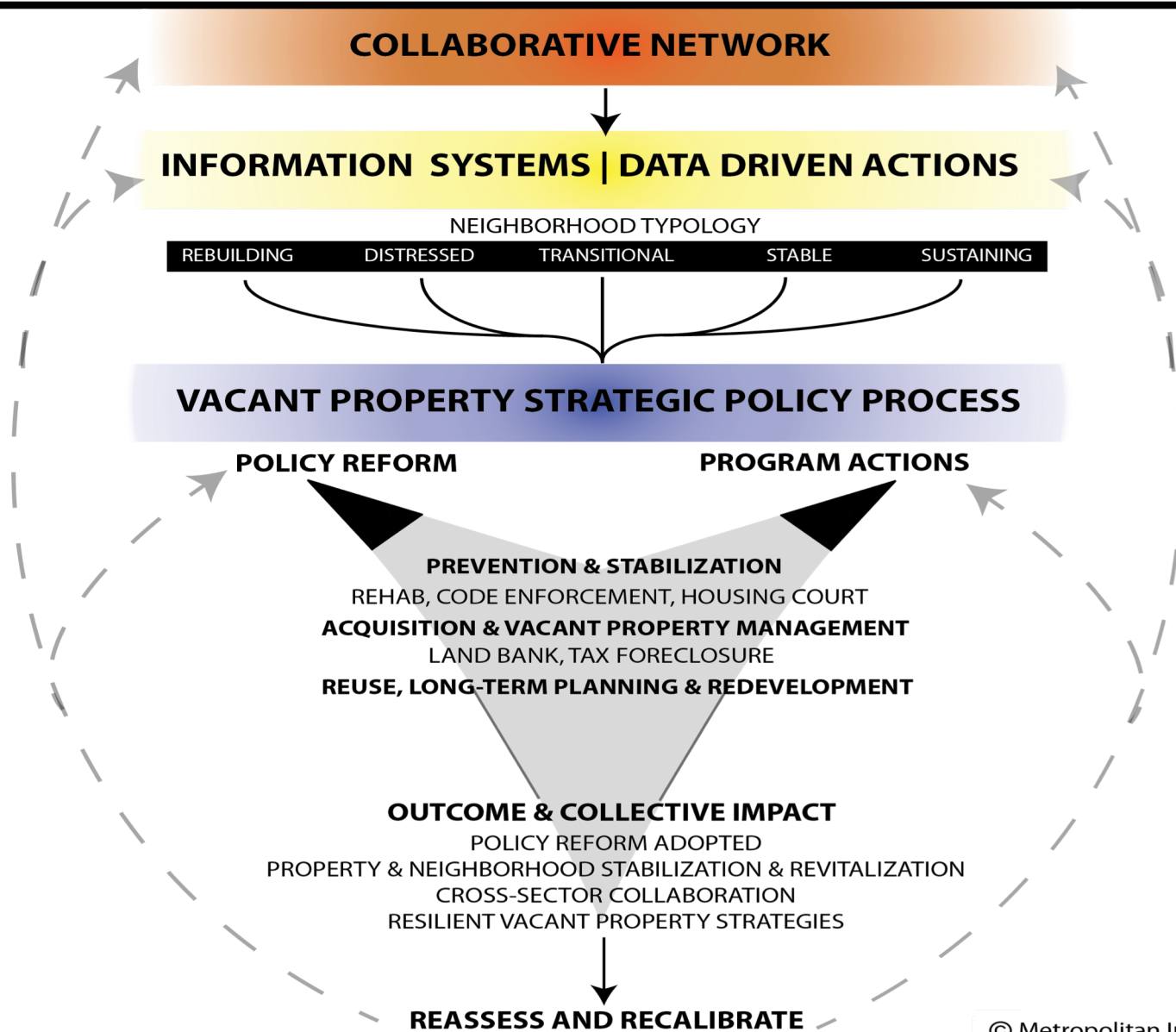
[The Meaning of Blight](#)

[BRENTIN MOCK](#)









CITY LAB , FEB 16,  
2017

<http://vacantpropertyresearch.com/blight-literature-review/>

# MODEL VACANT PROPERTY POLICY SYSTEM



© Metropolitan Institute at Virginia Tech

	Document the costs of inaction	Commission studies that show how blighted properties drain local and county budgets as well as the social and economic costs on neighborhoods.	Financial Impact of Blight Study Steel Valley, Allegheny County, PA
	Organize blighted/vacant properties working groups	Convene a cross section of public, private and nonprofit leaders to develop more comprehensive and coordinated responses to blight, including changes in state and local laws.	Abandoned Property In Indianapolis Report Indianapolis, IN
	Launch a good landlord program	Offer incentives to review landlords who maintain their properties blight- and crime-free.	Good Landlord Program Ogden City, Utah
	Conduct targeted code enforcement	Place-based code enforcement can stimulate market activity in selected neighborhoods through comprehensive property maintenance actions.	Neighborhoods in Bloom Richmond, Virginia
	Explore urban greening	Techniques like gardening, urban agriculture, green infrastructure, etc. Can be used as opportunities to address vacant lots and blighted land.	Urban Agriculture Feasibility Study Youngstown, OH
	Charter a land bank or adopt land-banking statutes and ordinances	Land banks can acquire neglected and/or tax delinquent properties and return them to the mainstream real estate market or support their improvement as public green space.	Chautauqua County Land Bank Chautauqua County, New York
	Publish a problem properties toolkit	Having a guide that explains how communities can take action with vacant and blighted properties.	From Blight to Bright Housing Alliance of Pennsylvania
	Expand the use of low-cost, high tech tools	Many neighborhood groups from New Orleans to Youngstown, Ohio, are using apps to inventory blighted properties in their communities. This helps to document the costs and identify opportunities for reuse.	MyPhoenix Phoenix, AZ

# The Five Ps

- **Plans**—comprehensive plans, strategic plans, action plans, etc.
- **Policies**—state and local government
- **Programs**—public, nonprofit, and private sectors
- **Projects**—policy, program or development
- **Place**—city, neighborhood, property

CROSS CUTTING—**Process, People and Partners**

# Memphis—Incubating Innovations

Blight is vacant or derelict structures and unmaintained property, usually characterized by litter, dumping, and abandoned personal property.



Neighborhood Preservation, Inc. estimates that at least 13,000 structures or vacant lots in Memphis qualify as being “blighted.” At least 10,000 properties are addressed a year for high weeds and grass concerns by City. Low population density, particularly within the core city, allows blight to spread almost unabated in some neighborhoods.

While there are a lot of blight initiatives going on in Memphis, an overarching, coordinated approach that would maximize existing efforts and attract new resources is not in place. As a result, self-perpetuating with a “culture of blight” is allowed to take hold, eroding the aesthetic standards of a community and frustrating other abatement efforts. Similarly, illegal dumping and littering activities are frequently committed by individuals passing through neighborhoods with no long-term stake in their condition or livability.

Some property owners would like to remediate the condition of their properties do not understand the full costs of doing so, which prevents them from taking action. Policymakers, program administrators, frontline inspectors, courts, and property owners all need to know where their abatement efforts would be most fruitful.

If we are going to effectively and permanently remove blight from our neighborhoods – and prevent its spread — Memphis and Shelby County need a single, focused strategy: the

<http://memphisfightsblight.com/>



# BLIGHT ELIMINATION STEERING TEAM

[Home](#) / [Blight Elimination Steering Team](#)

The Blight Elimination Steering Team has prepared its Action Plan to guide our work through 2020. If you have questions about any of the action items included in the document found at the link below, please contact [imani@npimemphis.org](mailto:imani@npimemphis.org).

[2019 – 2020 Action Plan](#)

[Previous BEST Action Plans](#)

[2017 – 2018 Action Plan](#)

## RECENT POSTS

[Top 10 Code Violators List | Quarter 2 – 2018](#)

[Top 10 Code Violators List Released](#)

[Memphis Neighborhood Blight Elimination Summit Workshop Presentations](#)

[Blight Fighters From Throughout Memphis Unite for Second Annual Blight Elimination Summit](#)

[City of Grit, Part 5](#)



© Memphis Fights Blight 2018. Allegiant theme by CPOThemes.

# NEIGHBORHOOD PRESERVATION SUMMIT

[Home](#) / [Neighborhood Preservation Summit](#)

## Memphis Neighborhood Preservation Summit 2018 Registration

---

**Date:** October 19, 2018

**Time:** 9:00 am – 2:00 pm

**Cost:** \$10.00

---

Neighborhood Preservation, Inc. is proud to host the Memphis Neighborhood Preservation Summit 2018! Join your fellow community stakeholders interested in inspiring, connecting, and convening with the actors interested in revitalizing and empowering Memphis neighborhoods. You've heard it said before, Memphis is a neighborhood city, they define the fabric of our city and are the core tapestry to the most unique and intricate urban environments in America. Whether you're a grassroots activist, policymaker, or business leader there is a seat for you at this year's Memphis Neighborhood Preservation Summit!

9:00a – 9:45a Open Plenary Program in the Neighborhood Christian Center gymnasium, welcoming the participants to the summit and reflecting on what has happened this year in neighborhoods and community development in Memphis.

## RECENT POSTS

[Top 10 Code Violators List | Quarter 2 – 2018](#)

[Top 10 Code Violators List Released](#)

[Memphis Neighborhood Blight Elimination Summit Workshop Presentations](#)

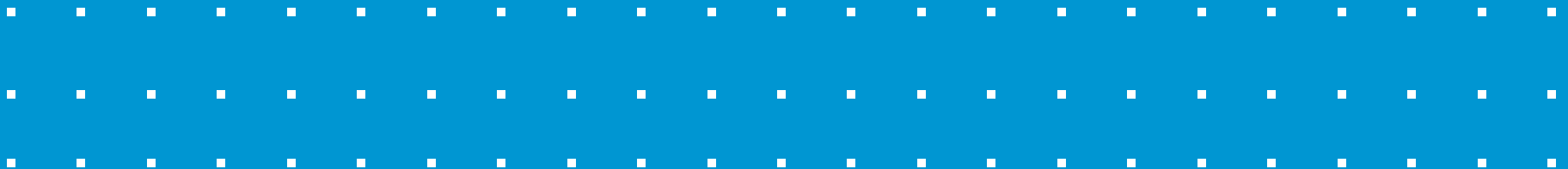
[Blight Fighters From Throughout Memphis Unite for Second Annual Blight Elimination Summit](#)

[City of Grit, Part 5](#)

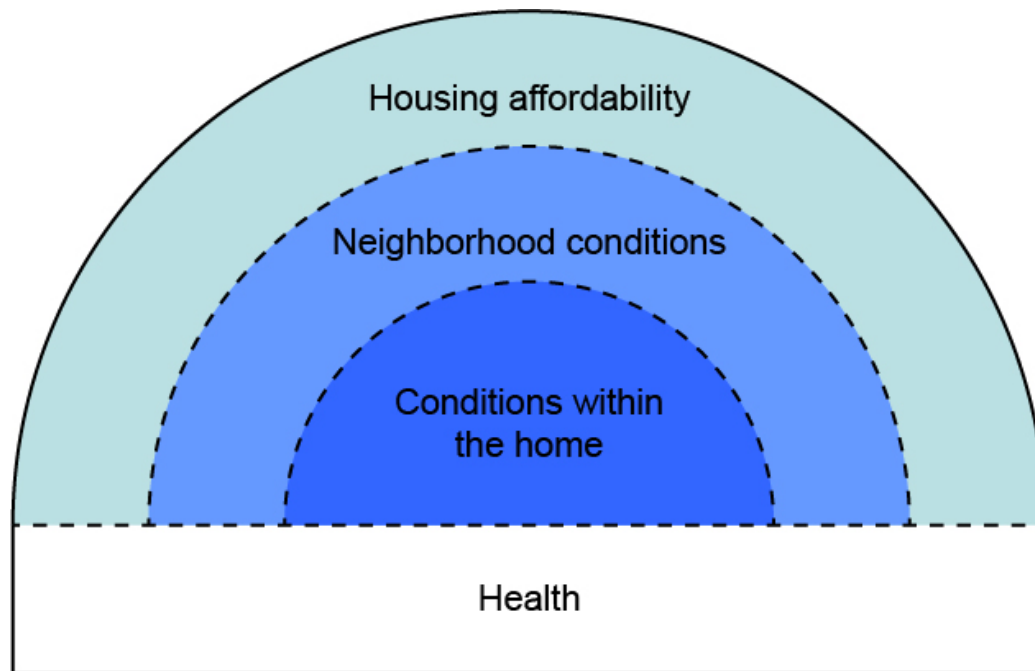




# Memphis Health Impact Assessment—*Substandard Housing and Strategic Code Enforcement*



# Social Determinants of Health



# Relationship of Housing and Health

**Housing quality:** Substandard housing is associated with increased morbidity, including infectious diseases, chronic illnesses (Sharfstein, 2008). Lead, mold, indoor air pollutants, and poor heat control directly negatively affect health (Shaw 2004).

**Housing affordability/stability:** Eviction, foreclosure, and other causes of housing instability are all associated with adverse health outcomes (Cohen 2007, Burgard et al. 2012, Arcaya et al. 2013).

**Access to quality education, transportation, and social capital** is limited by where one lives (Diez Roux and Mair, 2010).

**Neighborhood conditions:** cleaning/greening vacant lots associated with reduction in self-reported feelings of depression and worthlessness (South et al, 2018).

**Communities of color disproportionately live in neighborhoods with high concentrations of low-quality housing** (JCHS 2016). This pattern is partly due to **historical disinvestment** from communities of color, causing **economic and racial segregation** and entrenched disparities (Williams and Collins 2001, Subramanian et al. 2005, Shapiro et al. 2013).

Neighborhood **social cohesion mediates the association between physical deterioration and mental health** (Kruger et al, 2008).



## Urban Blight and Public Health—

Addressing the Impact of Substandard Housing, Abandoned Buildings and Vacant Lots (2017)

*Erwin De Leon, Columbia University, and Joseph Schilling, Urban Institute*

<https://www.urban.org/research/publication/urban-blight-and-public-health>

# The Project

**Strategic Health Impact Assessment:** assess and adapt policy and program models that elevate health as critical priority during policy design and development.

**Main Research Question:** How can strategic code enforcement (SCE) ensure that Memphis prioritize public health as a key policy and program outcome and facilitate stronger coordination with public health agencies, community health nonprofits, and health care institutions?



Where we live is one of the main social determinants of our health

# The Research Team

**Steve Barlow**, President and  
Founder, Neighborhood  
Preservation, Inc. Memphis

**Tina Stacy**, Senior Researcher,  
Urban Institute, DC

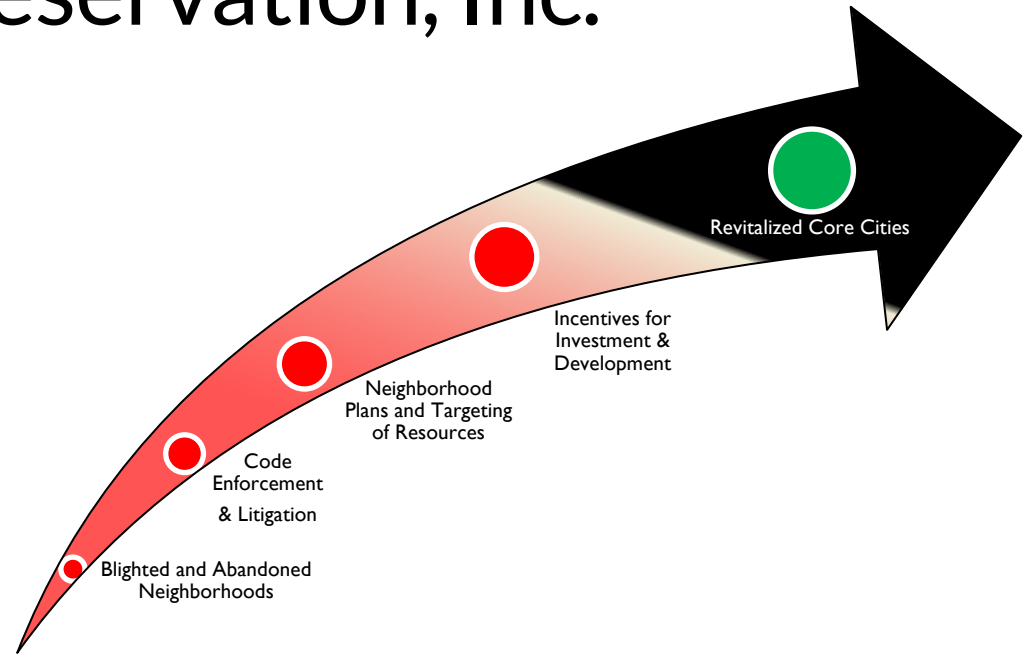
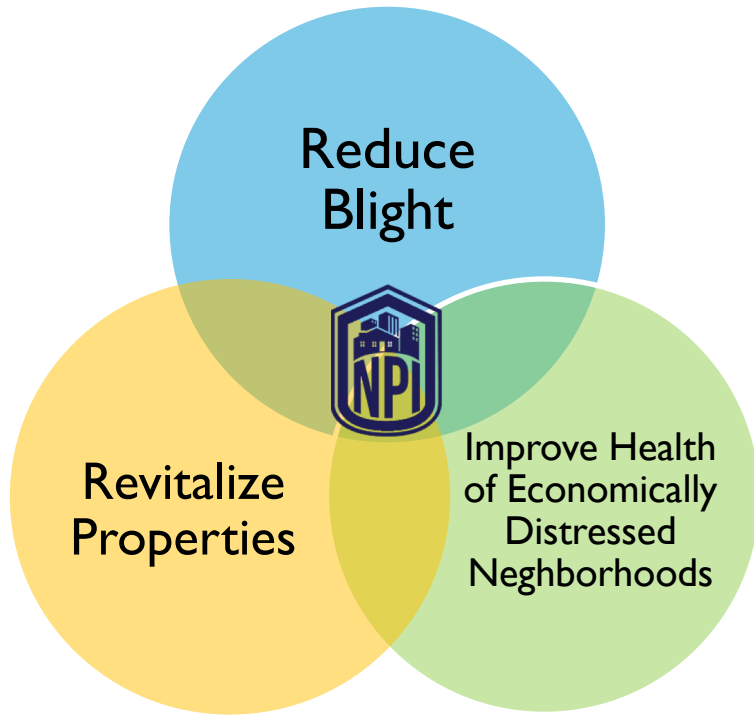
**Joe Schilling**, Senior Policy  
Research Associate, Urban  
Institute, DC



*With Ruth Gourevitch and Brady Meixell (Urban Institute), University of Memphis graduate research assistants Stephanie Modert (Public Health) Christina Crutchfield (Urban Planning) Esther Sykes-Wood and Richard Urban (Law)*



# Neighborhood Preservation, Inc.



# Substandard Housing in Memphis, TN

- Approximately 40,000 parcels (22%) were blighted as of a 2010 parcel survey
- Estimates today:
  - 13,000 blighted structures
  - 53,000 vacant lots
- Code Enforcement addresses 10,000 properties each year!

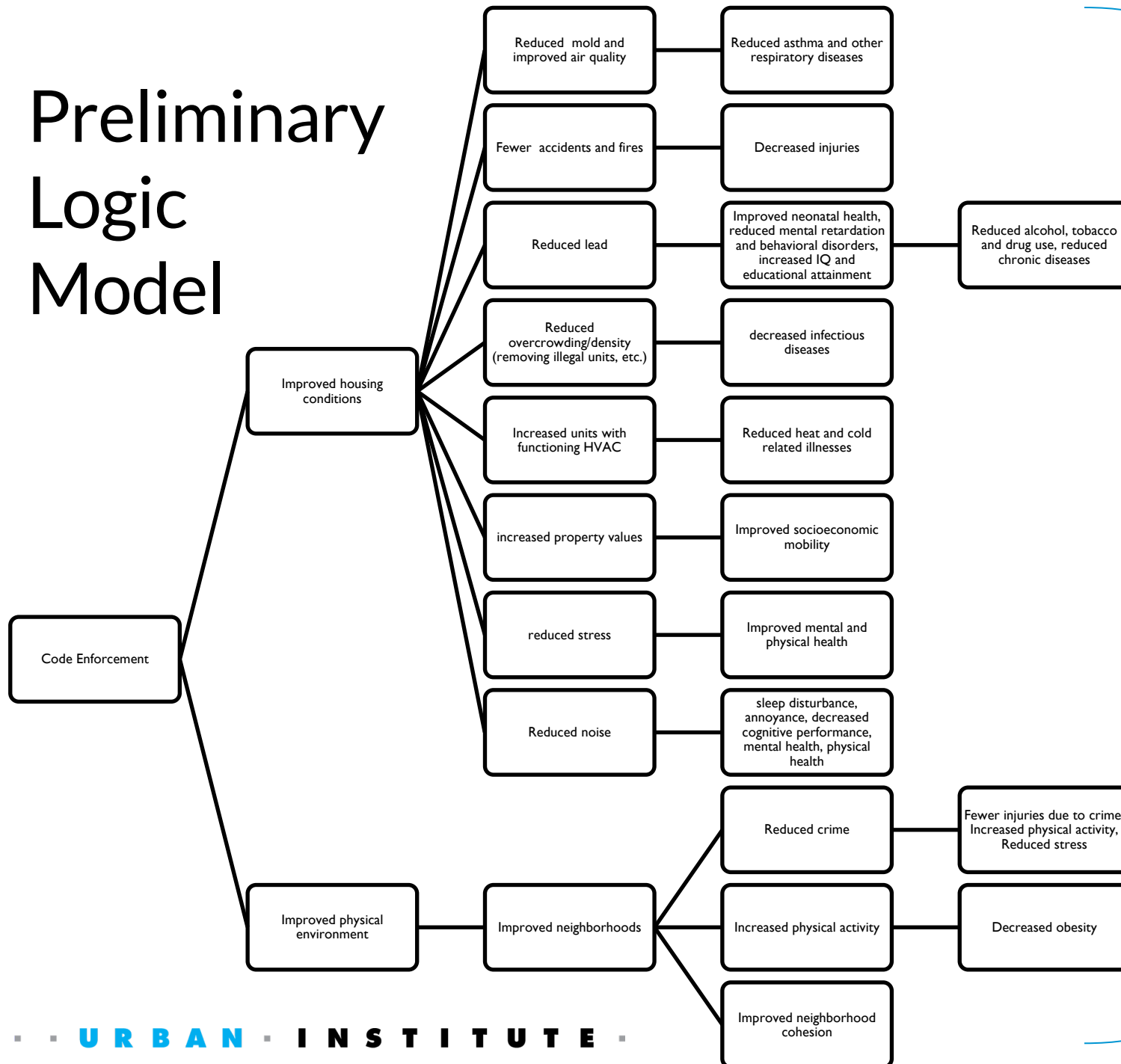




# Housing and Health Generally Separate

- Policies and programs targeted at housing and neighborhoods don't typically focus on health as a primary policy goal or objective
  - **Example:** housing code inspectors throughout the country often respond to complaints and cite violations rather than prioritizing proactive interventions for properties based on potential negative health outcomes such as lead and mold
- Code enforcement activities in the City of Memphis are under the jurisdiction of two separate bodies.
  - The City of Memphis Department of Housing/Code Enforcement is responsible for all code violations related to safety and home interiors
  - The Shelby County Health Department is responsible for any health code issues related to the exterior of the building and those that cause infectious diseases

# Preliminary Logic Model



Improved quality of life  
Improved health  
Reduced mortality

# HIA Methods

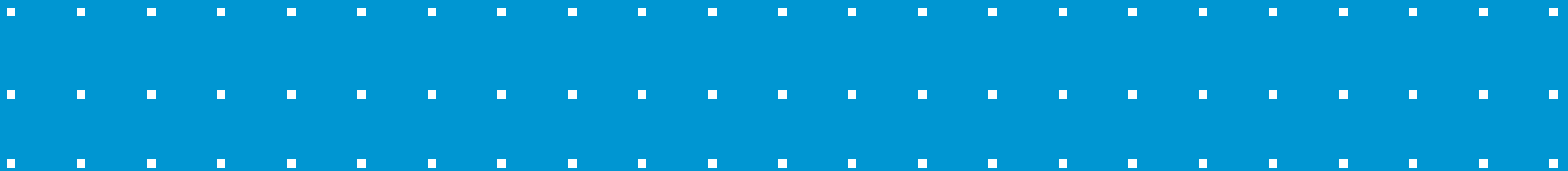
Quantitative—Descriptive analyses of:

- Code enforcement data (County Health, City Housing, Environmental Court)
- Health data (500 Cities, County Health, Hospital Discharge)
- Crime data (Administrative data)
- Housing data (ACS, City data)

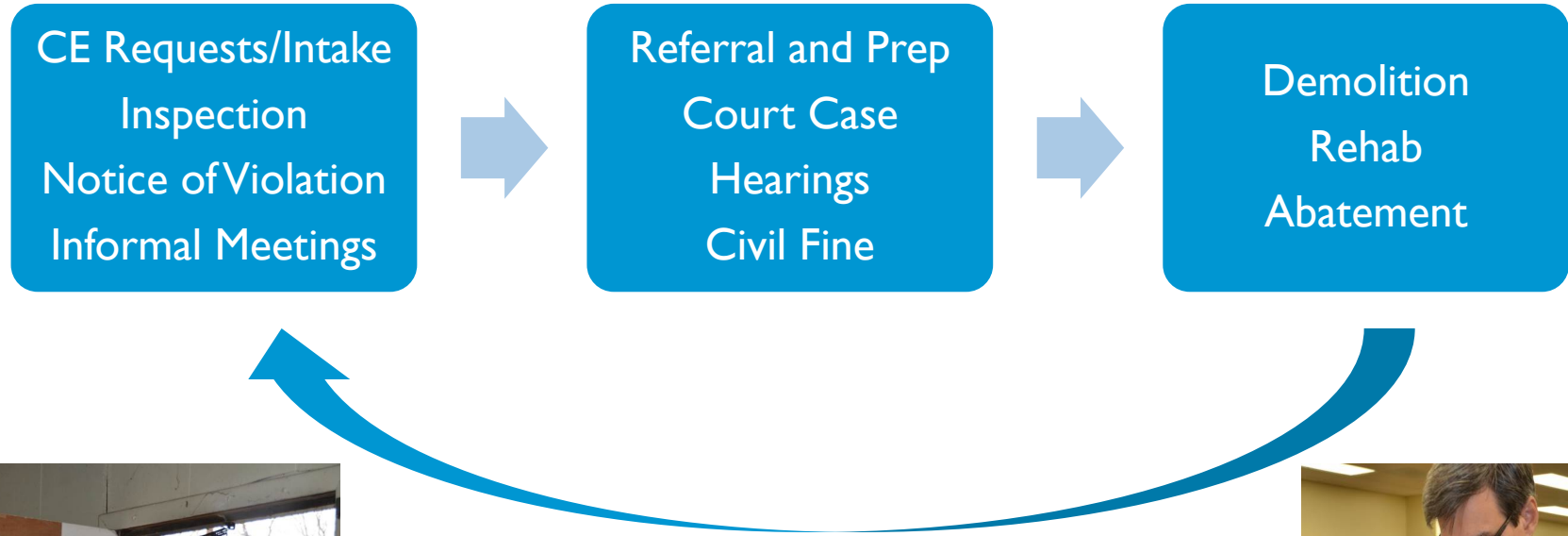
Qualitative

- Process mapping
- Interviews and focus groups with key stakeholders
- Stakeholder analysis
- Policy fields analysis

# A Code Enforcement Primer



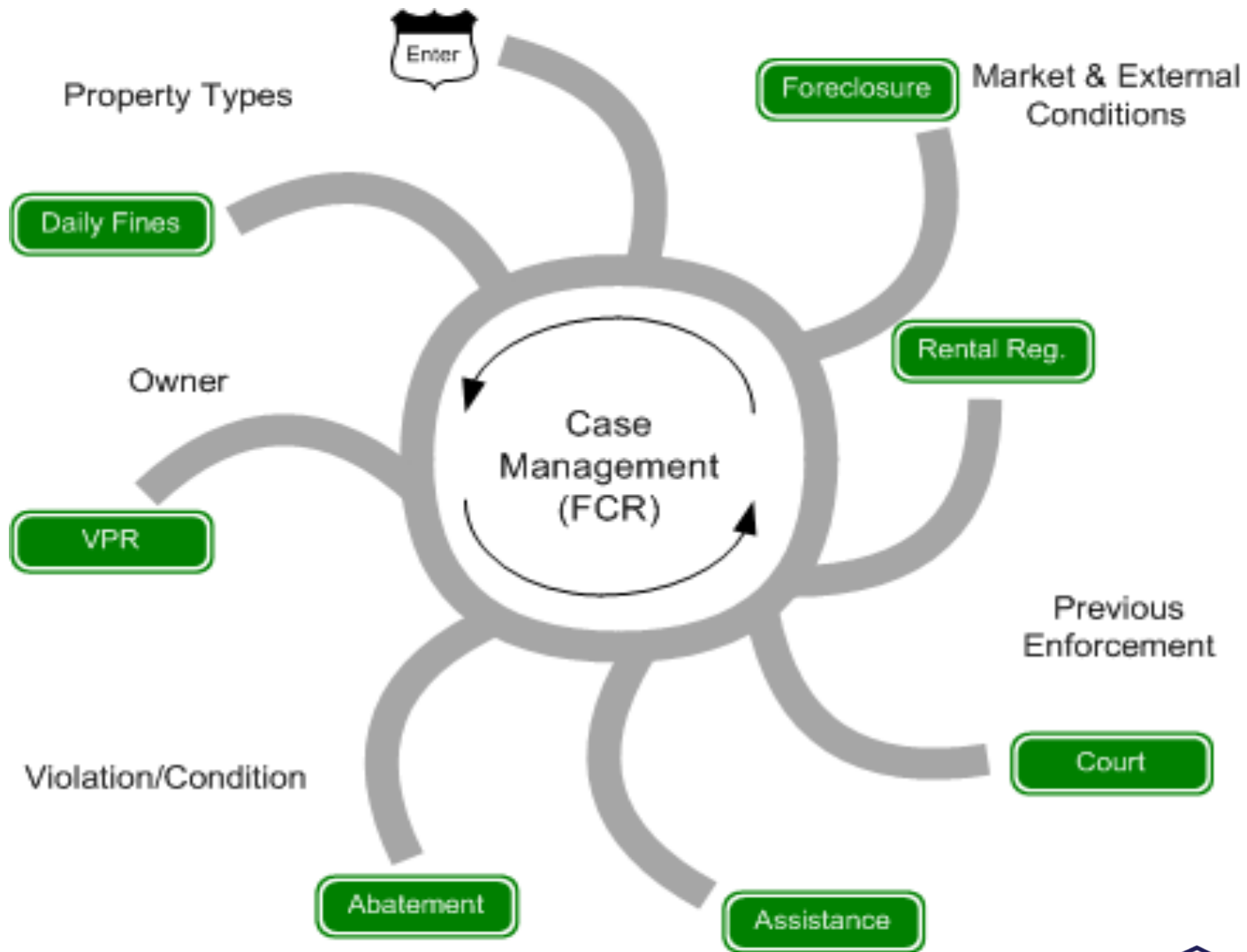
# Housing Code Enforcement in Memphis



# 311 / Email / Call / Field



# Code Enforcement Round About



# Strategic Code Enforcement

***Strategic Code Enforcement (SCE)* refers to the organization of critical capacities, resources, and activities into a dynamic and adaptive system with identified goals, policies, and procedures.**

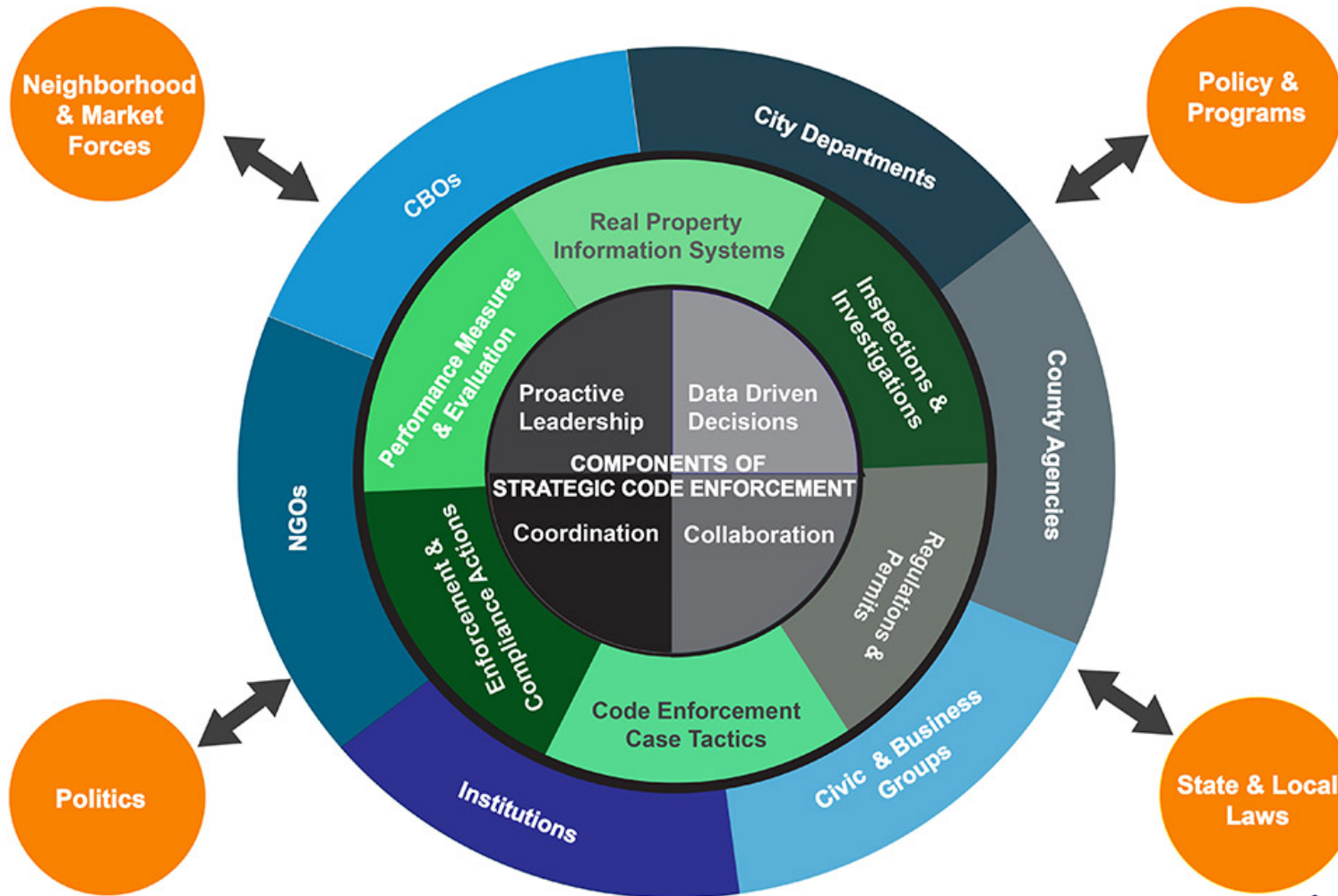
- More than just running a program or making case-by-case tactical decisions to resolve problem properties, SCE examines current neighborhood and market conditions within the context of broader planning, housing and community development policies and plans. SCE prioritizes problems and actions based on market, neighborhood and real property data so that it can more effectively deploy its portfolio of legal and policy interventions.
- SCE demands close inter-agency/inter-departmental coordination that facilitates meaningful partnerships and engagements with city and county officials, community organizations, nonprofits, institutions, and neighborhood residents.



Neighborhood  
Preservation  
Inc.



# The Constellation of Strategic Code Enforcement

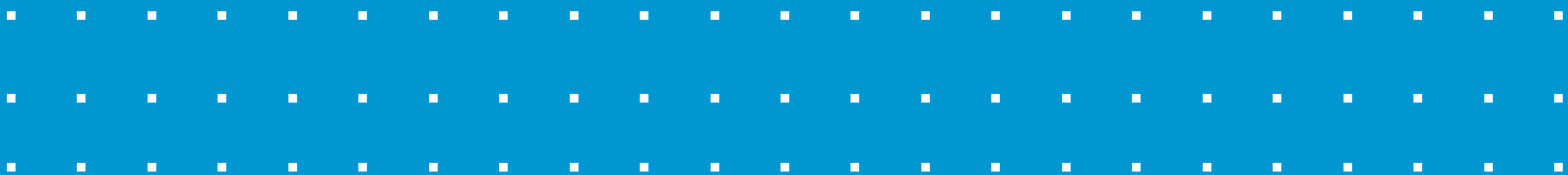




**URBAN**

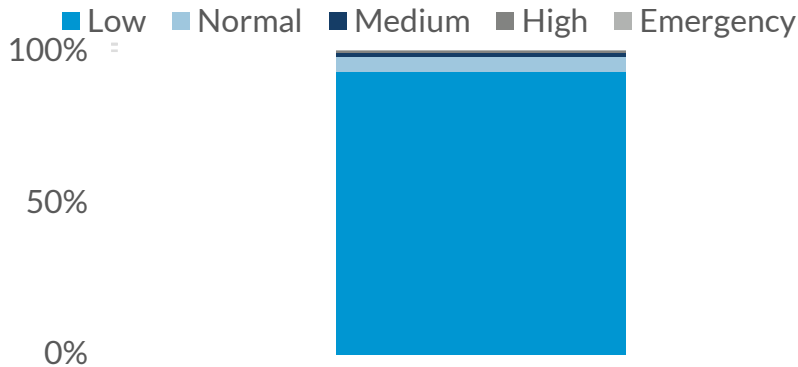
INSTITUTE · ELEVATE · THE · DEBATE

# Findings

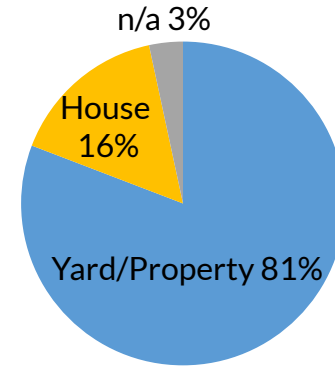


# Key Findings

## Most city code service requests listed as low priority

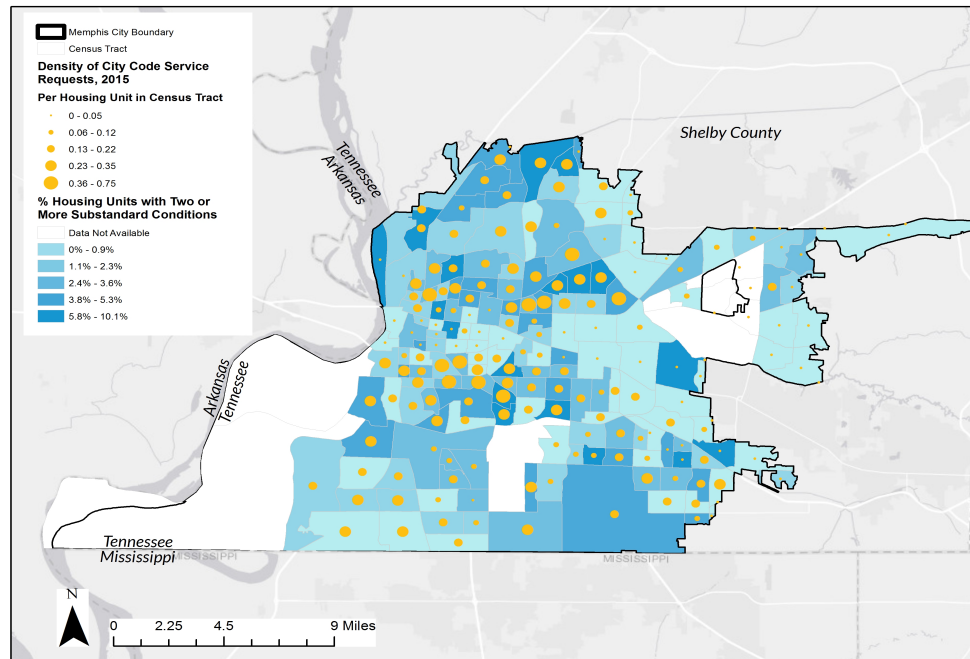


## Most city code service requests for external issues



## Service Requests Low in Areas with most Substandard Housing

Duplexes make up only 3.1 percent of all units in the city, but about 35% of all service requests



## Gaps in services:

- Mold
- Bed Bugs
- Lead

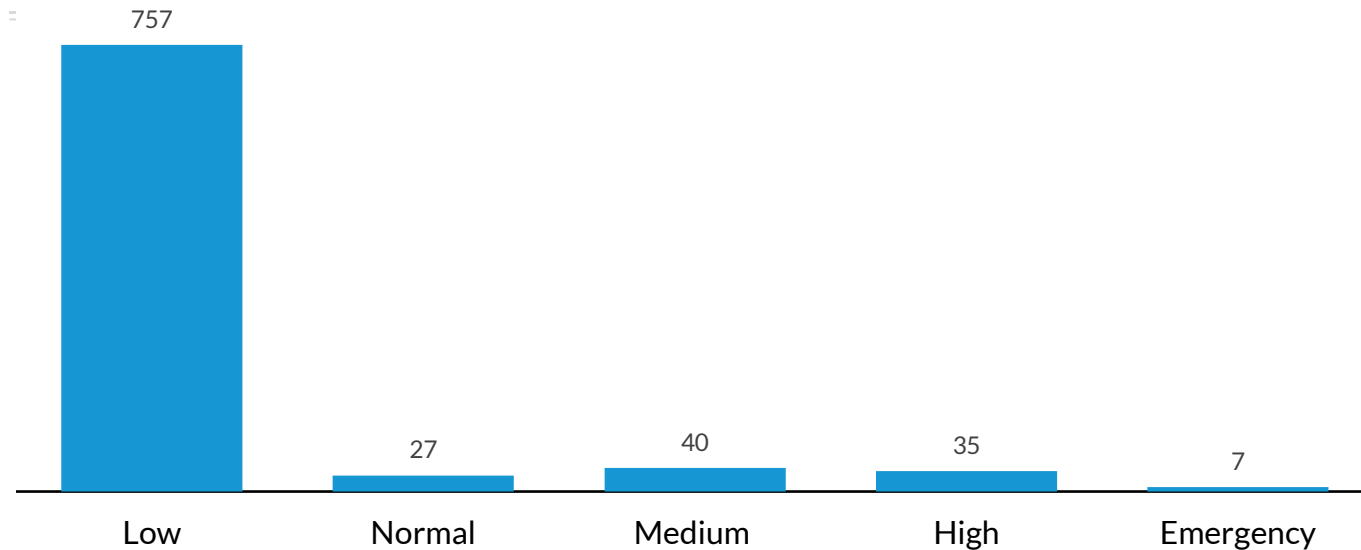


Neighborhood  
Preservation  
Inc.

# Gaps in Services: Bed Bugs and Mold

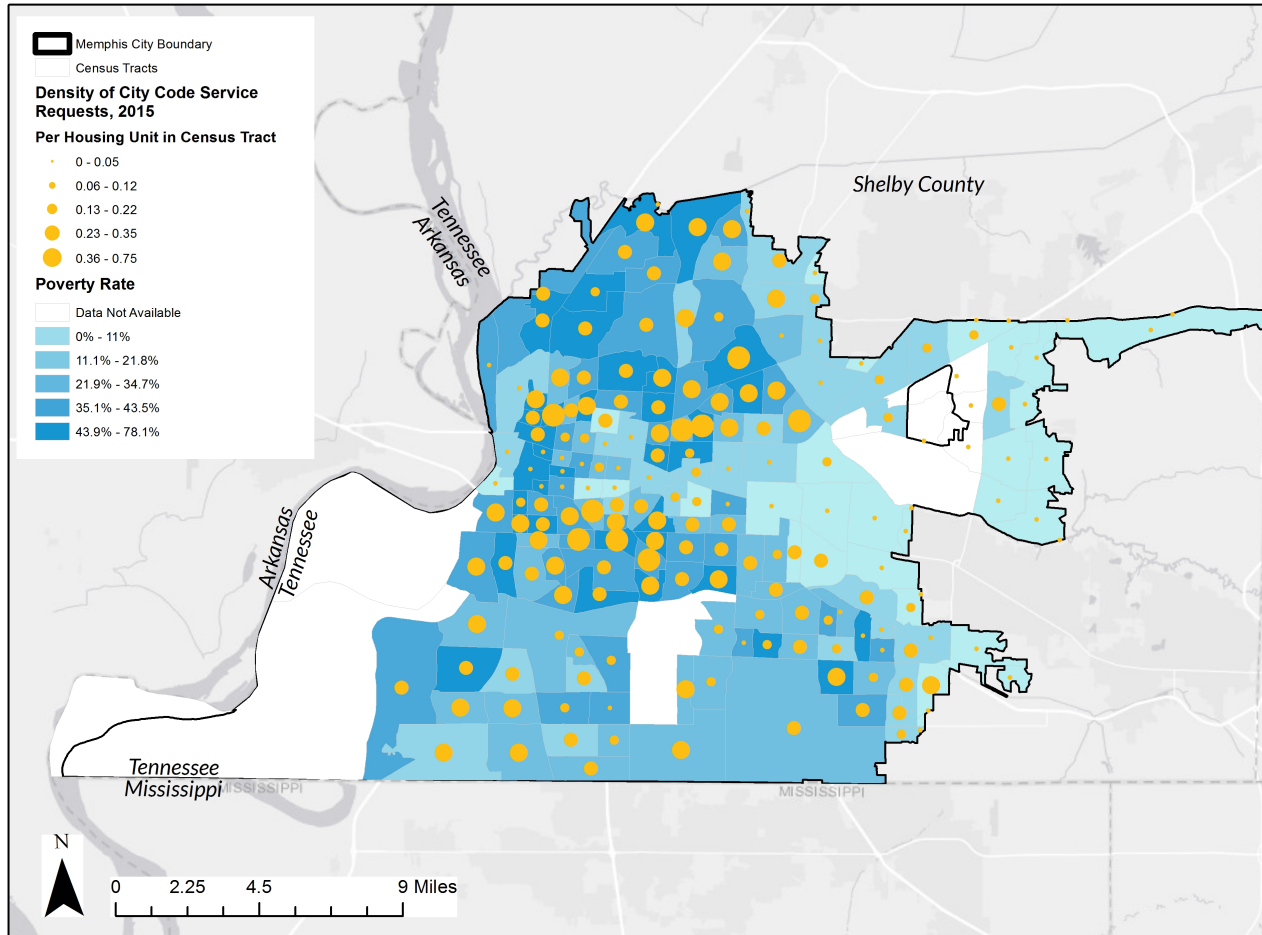
**Mold:** Unlike in many other states, there is no statute within Tennessee requiring any agency to take responsibility for addressing mold. A very small proportion of code service requests in Memphis – 1.4 percent -- pertained to mold in 2015 and 2016, and those that did were categorized as low priority:

Number of Mold Service Requests by Prioritization, 2016

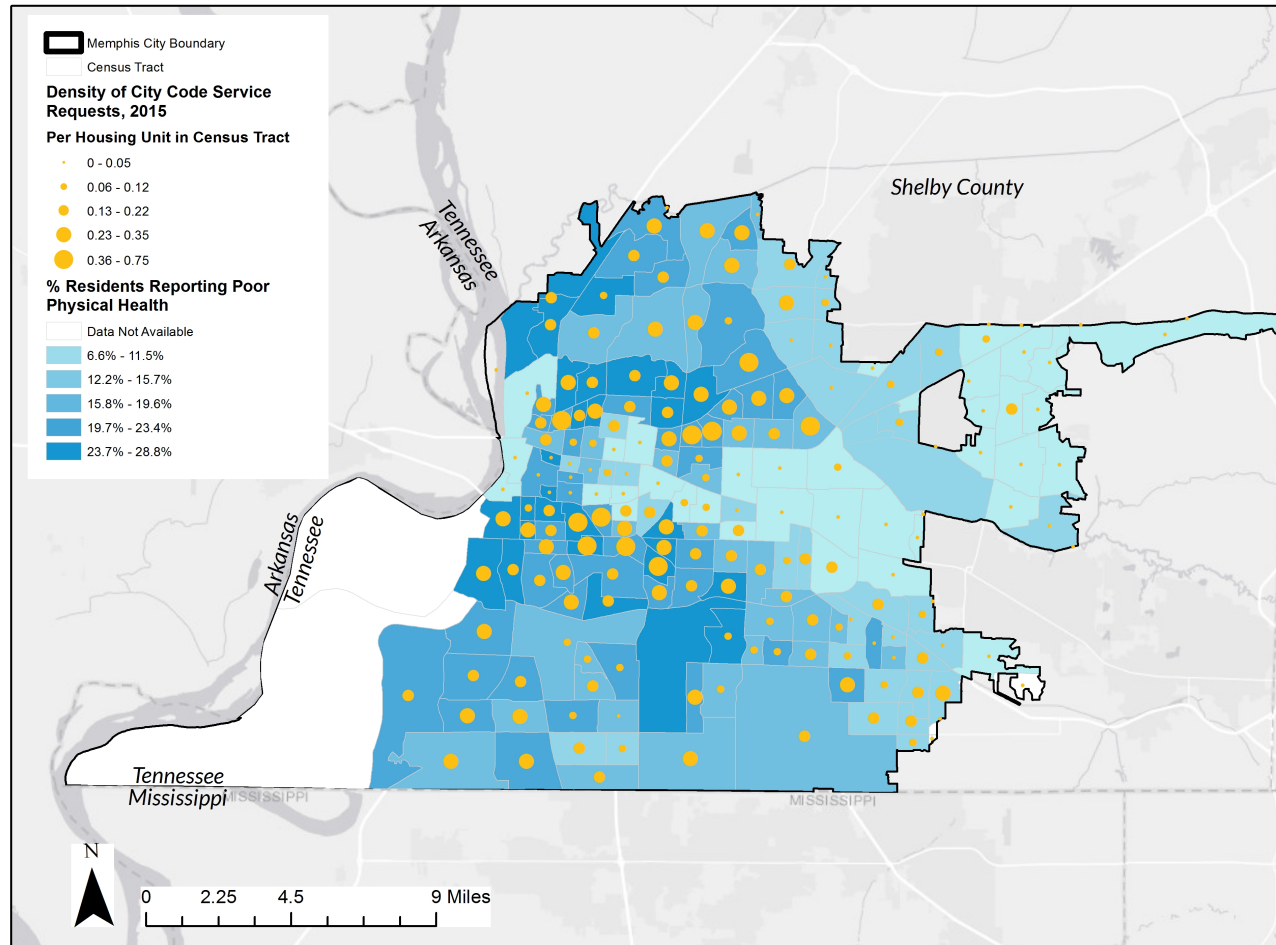


Neighborhood  
Preservation  
Inc.

# Service Requests Concentrated in High Poverty Neighborhoods



# And in Neighborhoods with Poor Physical Health

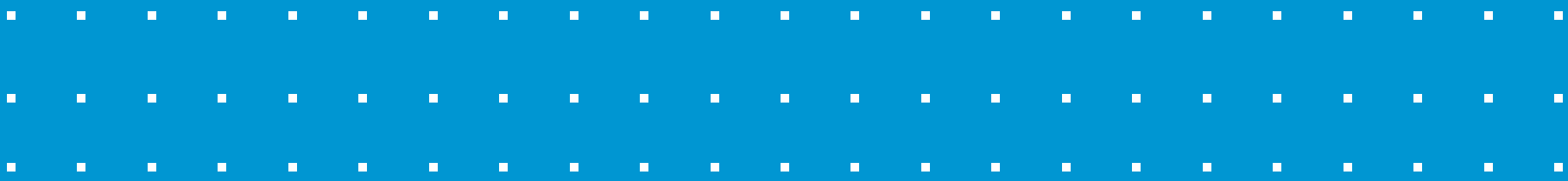




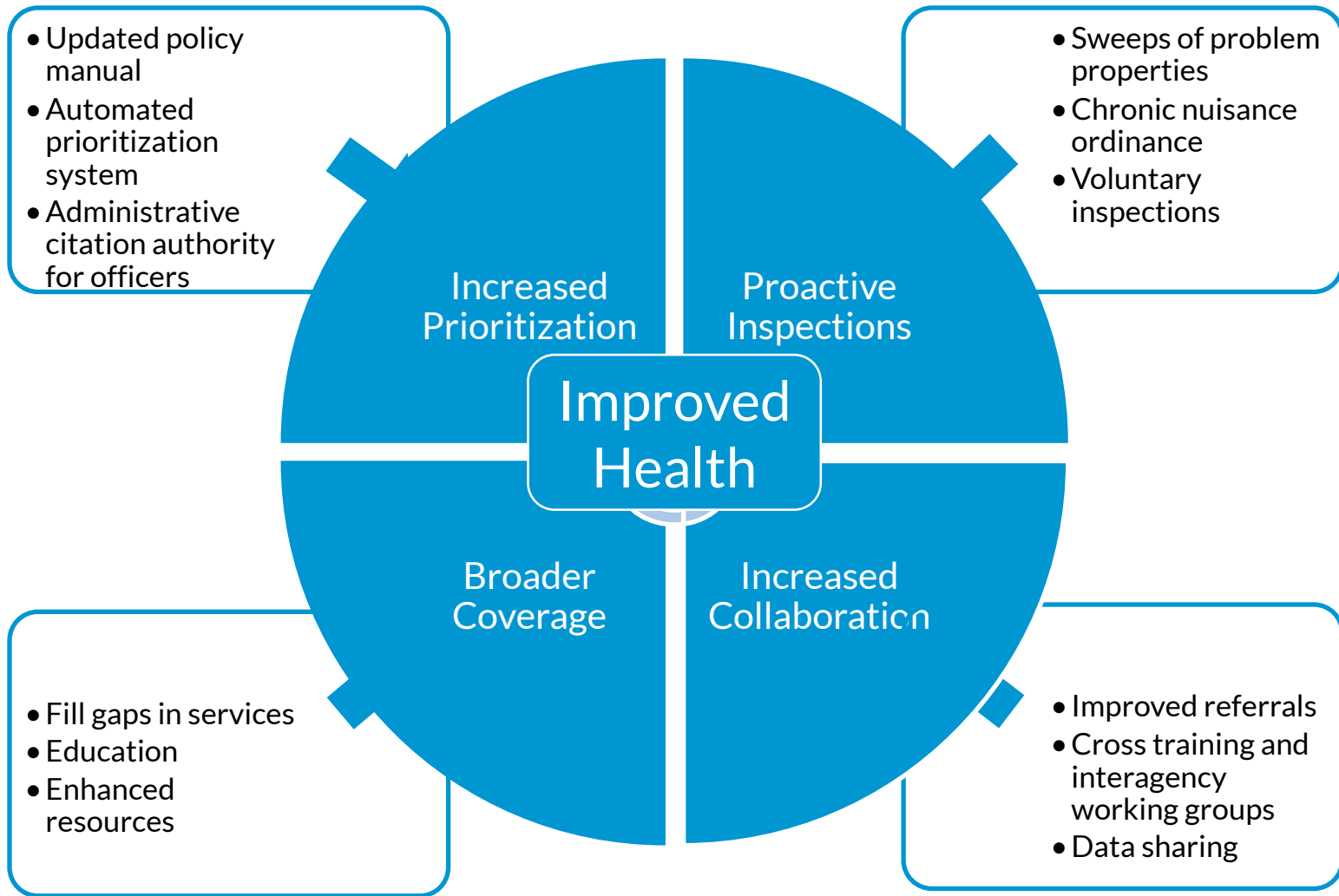
**URBAN**

INSTITUTE · ELEVATE · THE · DEBATE

# Recommendations



# Recommendations





# Evidence Informed Laws, Policies, and Programs—Intersections with Urban Blight, HIAs, and Code Enforcement

- ❑ Create a shared agenda—Memphis’ Blight Elimination Charter—to build the foundation for cross sector, cross disciplinary action.
- ❑ Strategic Code Enforcement as a preventative health strategy?
- ❑ Recognize the disciplinary and regulatory division between the policies that reclaim vacant properties vs. those that facilitate reuse
- ❑ Understand what the research says and does not say about various interventions
- ❑ Health Impact Assessments as a collaborative process for examining/elevating the importance of the law, policy and health intersection.
- ❑ Little research/program evaluations on the effectiveness of interventions, (policies, programs, etc.).

For more details, see the full  
report at:  
<https://urbn.is/2CmmICF>

Tina Stacy and Joe Schilling

Jschilling@urban.org

cstacy@urban.org

# Questions and Discussion





# Who's Leading the Leading Health Indicators? Webinar

Join us on  
**Thursday, November 15** from  
**12:00 to 1:00 pm ET** for a  
Healthy People 2020  
***Who's Leading the Leading  
Health Indicators?*** webinar on  
**Reproductive and Sexual  
Health.**

To register, visit:  
[www.healthypeople.gov](http://www.healthypeople.gov)



# JOIN HEALTHY PEOPLE AT APHA 2018!



**APHA 2018**  
ANNUAL MEETING & EXPO  
SAN DIEGO | NOV. 10 - 14  
.....  
CREATING THE HEALTHIEST NATION:  
HEALTH EQUITY NOW

*Come hear more about Healthy People  
at this year's American Public Health  
Association Annual Meeting:*

**1. Sunday, November 11 2:30 – 6:00 PM PT**

*Session 2008.0: Listening Session - Eliminating Health Disparities and Achieving Health Equity: Utilizing Healthy People 2020 Data*

**2. Monday, November 12 10:30 AM – 12:00 PM PT**

*Session 3115.0: Promoting Equity, Disease Prevention, and Health Promotion: Developing Healthy People 2030*

**3. Tuesday, November 13 5:00 PM – 6:30 PM PT**

*Session 4429.0: Learning to Better Leverage Law and Policy to Address the Social Determinants of Health, Improve Health Equity, and Reach our National Health Goals*

**4. Wednesday, November 14 8:30 AM – 10:00 AM PT**

*Session 5001.0: Role of Law and Policy in Promoting and Supporting Longer, Happier, Healthier Lives for all Americans: Lessons from Healthy People, States, and Communities*